

Models: WP	Category: Non-Capacity Solenoid Pump
	Application: Water Series
	Classification: Pressure (Piston) Type

FEATURES:

- This model has a most capacity in water series pumps.
- The WP-LK11 model is noted for its use of high quality materials superior in chemical, oil, and heat resistance.

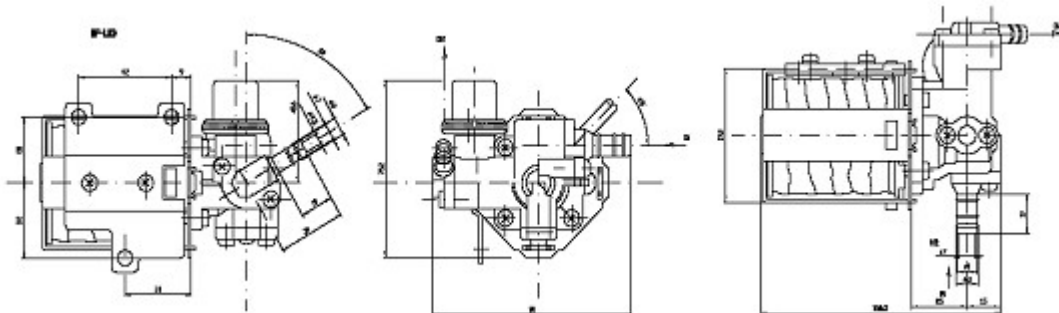
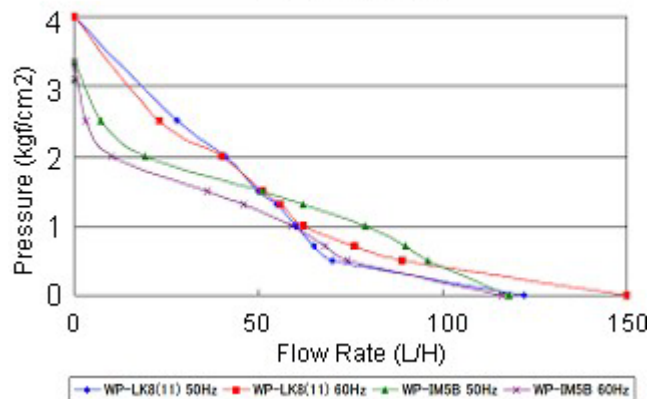

PRIMARY APPLICATION:

- Used to transfer water-based liquids under pressure.

SPECIFICATIONS:

MODELS	WP-LK8	WP-LK11	WP-IM5
SPECIFICATIONS			
Power Sources	100/200VAC, 24VDC (PWM/PFM)		
Power Consumption (Typical)(W)	50 (TyP.)		43 (TyP.)
Max Free Flow Rate (l/h)(TyP.)	120		110
Max Pressure (No Flow)(Mpa)(TyP.)	0.4		0.3
Suction Level (m)	-0.5		
Liquid	Water	Water or Chemical Water	Water
Operating Temperature	-20 +40		
Weight (kg)	0.9		0.75

WP-LK11(100VAC) WP-LK8 (100VAC)
P-Q Characteristic



Nippon Control Kogyo Co., Ltd. Sales Dep.

5-1-16 Chiyoda, Sakado, Saitama. 3500214 JAPAN

TEL: 81.49.283.7711 FAX: 81.49.283.7717 E-mail: inquiry@nipcon.co.jp URL: <http://www.nipcon.co.jp>